

**Unique  
ICAD treatment concept**  
PTA and stenting without catheter exchange

**NeuroSpeed®**  
PTA Balloon Catheter



**CREDO®**  
Stent

indicated for  
ACUTE (LVO) & ELECTIVE stenting

**ORDERING INFORMATION | CREDO® with NeuroSpeed®**

| Labelled CREDO® Dimensions (mm) | Reference Number | Stent Diameter (mm) | Stent Length (mm) | Recommended Vessel Diameter (mm) | Required Catheters for Delivery  |
|---------------------------------|------------------|---------------------|-------------------|----------------------------------|----------------------------------|
| 3.0 × 15                        | 01-000930        | 3.0                 | 15                | 2.0–2.5                          | NeuroSpeed® PTA Balloon Catheter |
| 3.0 × 20                        | 01-000931        | 3.0                 | 20                | 2.0–2.5                          |                                  |
| 3.0 × 25                        | 01-000932        | 3.0                 | 25                | 2.0–2.5                          |                                  |
| 3.0 × 30                        | 01-000933        | 3.0                 | 30                | 2.0–2.5                          |                                  |
| 4.0 × 15                        | 01-000940        | 4.0                 | 15                | 2.5–3.5                          |                                  |
| 4.0 × 20                        | 01-000941        | 4.0                 | 20                | 2.5–3.5                          |                                  |
| 4.0 × 25                        | 01-000942        | 4.0                 | 25                | 2.5–3.5                          |                                  |
| 4.0 × 30                        | 01-000943        | 4.0                 | 30                | 2.5–3.5                          |                                  |
| 5.0 × 15                        | 01-000950        | 5.0                 | 15                | 3.5–4.5                          |                                  |
| 5.0 × 20                        | 01-000951        | 5.0                 | 20                | 3.5–4.5                          |                                  |
| 5.0 × 25                        | 01-000952        | 5.0                 | 25                | 3.5–4.5                          |                                  |
| 5.0 × 30                        | 01-000953        | 5.0                 | 30                | 3.5–4.5                          |                                  |

All sizes feature HRF (High Radial Force)

| Labelled NeuroSpeed® Dimensions (mm) | Reference Number | Balloon Diameter (mm) | Balloon Working Length (mm) | ID (Inch) | OD dist. / prox. (French) | Usable Length (cm) |
|--------------------------------------|------------------|-----------------------|-----------------------------|-----------|---------------------------|--------------------|
| 1.5 × 8                              | 01-000605        | 1.5                   | 8                           | 0.0165    | 2.7 / 3.7                 | 150                |
| 1.5 × 15                             | 01-000615        | 1.5                   | 15                          | 0.0165    | 2.7 / 3.7                 | 150                |
| 2.0 × 8                              | 01-000600        | 2.0                   | 8                           | 0.0165    | 2.7 / 3.7                 | 150                |
| 2.0 × 15                             | 01-000610        | 2.0                   | 15                          | 0.0165    | 2.7 / 3.7                 | 150                |
| 2.5 × 8                              | 01-000601        | 2.5                   | 8                           | 0.0165    | 2.7 / 3.7                 | 150                |
| 2.5 × 15                             | 01-000611        | 2.5                   | 15                          | 0.0165    | 2.7 / 3.7                 | 150                |
| 3.0 × 8                              | 01-000602        | 3.0                   | 8                           | 0.0165    | 2.7 / 3.7                 | 150                |
| 3.0 × 15                             | 01-000612        | 3.0                   | 15                          | 0.0165    | 2.7 / 3.7                 | 150                |
| 3.5 × 8                              | 01-000603        | 3.5                   | 8                           | 0.0165    | 2.7 / 3.7                 | 150                |
| 3.5 × 15                             | 01-000613        | 3.5                   | 15                          | 0.0165    | 2.7 / 3.7                 | 150                |
| 4.0 × 8                              | 01-000604        | 4.0                   | 8                           | 0.0165    | 2.7 / 3.7                 | 150                |
| 4.0 × 15                             | 01-000614        | 4.0                   | 15                          | 0.0165    | 2.7 / 3.7                 | 150                |

| Inflation Pressure (bar) | NeuroSpeed® Diameter (mm) |        |        |        |        |        |
|--------------------------|---------------------------|--------|--------|--------|--------|--------|
|                          | 1.5                       | 2.0    | 2.5    | 3.0    | 3.5    | 4.0    |
| 2.0                      | 1.24                      | 1.70   | 2.07   | 2.38   | 2.95   | 3.26   |
| 4.0                      | 1.38                      | 1.84   | 2.29   | 2.71   | 3.20   | 3.67   |
| 6.0                      | 1.50*                     | 2.00*  | 2.50*  | 3.00*  | 3.50*  | 4.00*  |
| 8.0                      | 1.67                      | 2.16   | 2.67   | 3.21   | 3.73   | 4.24   |
| 10.0                     | 1.85                      | 2.30   | 2.80   | 3.41   | 3.90   | 4.42   |
| 12.0                     | 2.01                      | 2.43   | 2.94   | 3.59   | 4.06** | 4.59** |
| 14.0                     | 2.17**                    | 2.56** | 3.06** | 3.78** | –      | –      |

\* Nominal pressure \*\* Rated burst pressure

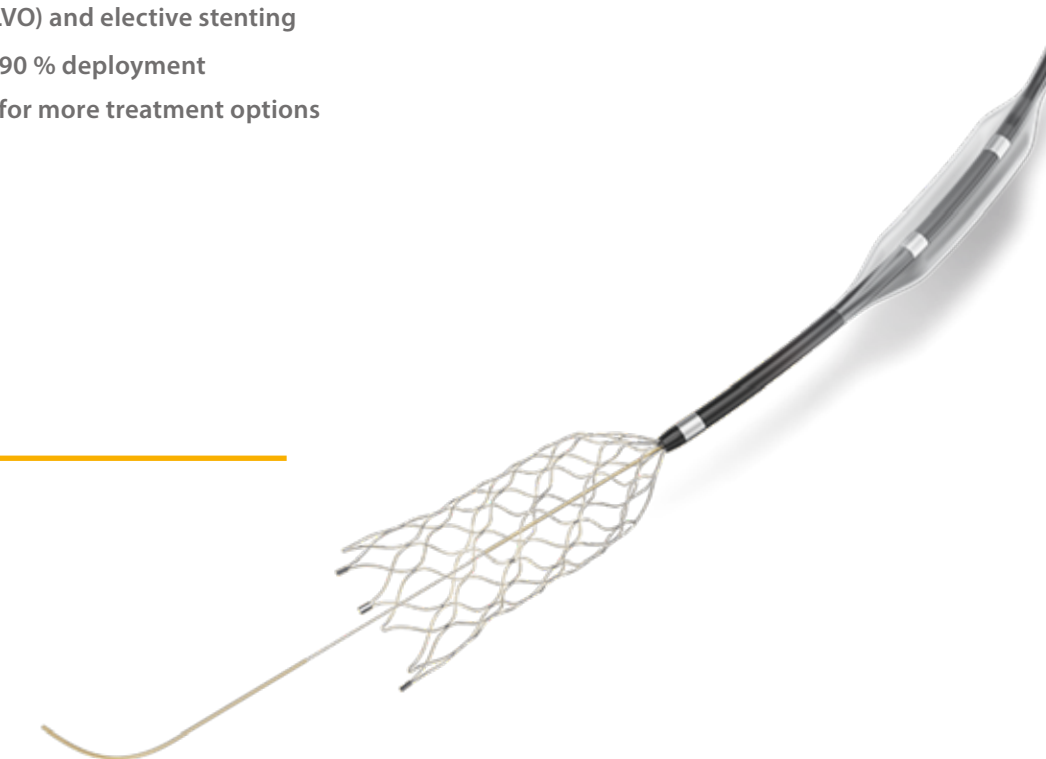
All changes or modifications, may they be technical or other, or changes in the availability of products are expressly reserved. Please contact your local Acandis® representative for product availability and information on compatible (micro)catheters. Not available for sale in the United States.

CE 0297

9-000092 EN 09/2023

**CREDO®** | **NeuroSpeed®**  
Stent | PTA Balloon Catheter

- » Approved for acute (LVO) and elective stenting
- » Repositionable up to 90 % deployment
- » Broad Range of sizes for more treatment options



### Simply unique

The unique combination possibility of the low-profile NeuroSpeed® PTA Balloon Catheter with the self-expanding laser-cut CREDO® Stent enables a gentle and effective stenosis treatment.



### NeuroSpeed® PTA Balloon Catheter

#### Flexible

The NeuroSpeed® PTA Balloon Catheter is ideal for gentle and controllable PTA of intracranial stenosis.

If stent placement is required for stabilisation of the stenotic lesion, the CREDO® Stent can be delivered through the low-profile NeuroSpeed® PTA Balloon Catheter without exchange manoeuvre.

#### Smooth

The NeuroSpeed® PTA Balloon Catheter features a slim entrance profile and double hydrophilic coating.

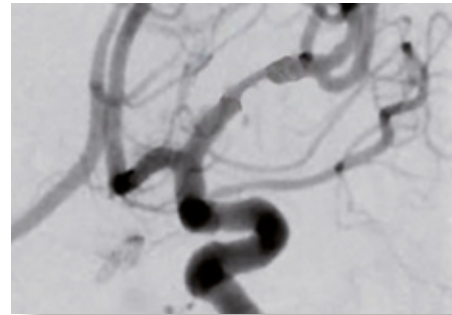
The flexible 10 mm tip, with distal tip X-ray marker, ensures atraumatic access and easy navigation. With a usable length of 150 cm it is possible to reach more distal vessels.

#### Effective

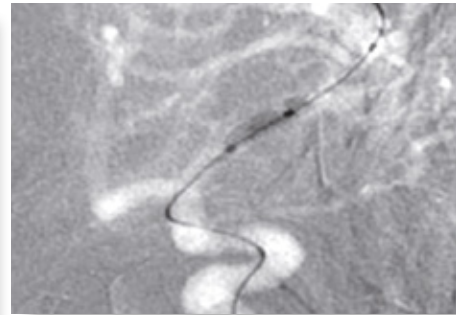
The semi-compliant balloon material of the NeuroSpeed® PTA Balloon Catheter enables a precise and controllable inflation behaviour for gentle and effective dilation.

The portfolio comprises 6 different balloon diameters ranging from 1.5 mm to 4.0 mm as well as 2 different balloon lengths (8 mm and 15 mm).

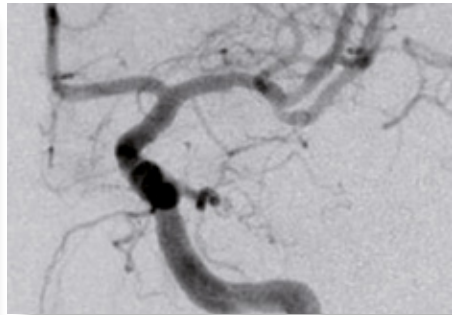
### Treatment with NeuroSpeed® PTA Balloon Catheter<sup>1</sup>



Pre-interventional diagnostic stenosis grade 80 %

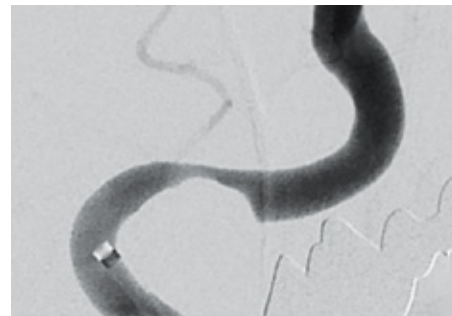


Inflation with NeuroSpeed® PTA Balloon Catheter

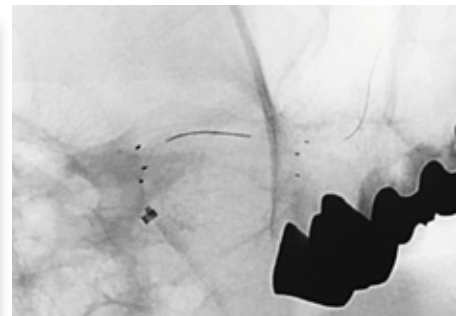


Control after dilation: final stenosis grade ~ 10 %

### Treatment with CREDO® Stent<sup>2</sup>



Pre-interventional diagnostic stenosis grade 80 %

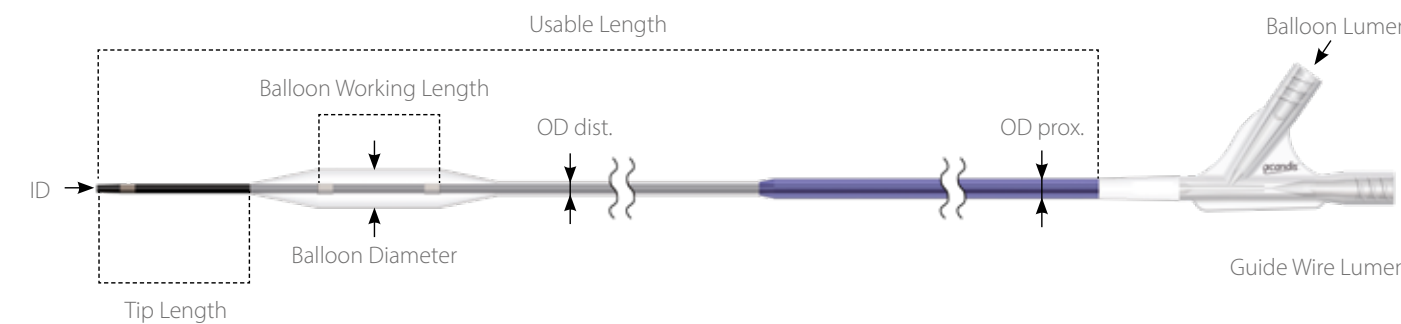


Deployment of CREDO® Stent after pre dilatation with NeuroSpeed® PTA Balloon Catheter



Final control after stent placement stenosis grade 30 %

### Technical Specification



### CREDO® Stent

#### Reliable

The CREDO® Stent is based on Acandis' reliable and proven laser-cut stent platform with asymmetric cell geometry, enabling excellent adaptability even in tortuous anatomies.

Thanks to the well-established radiopaque marker concept and the resheathability up to 90% of its length, the CREDO® Stent provides maximum safety and comfort during procedure.

#### Gentle

The CREDO® Stent gives additional stabilisation and support to dilated stenosis.

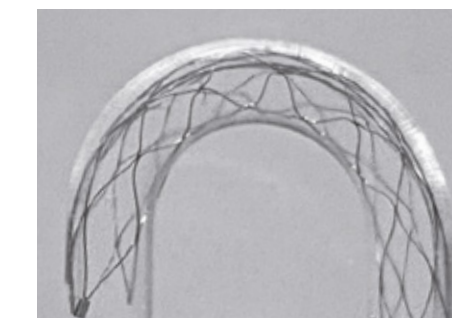
Compared to the ACCLINO® flex plus Stent (for aneurysm bridging) the CREDO® Stent features a higher radial force, which is well-balanced and adjusted for stenosis treatment.

The CREDO® Stent exerts an outward force optimised for perfect vessel wall apposition and a high resistive force against compression.

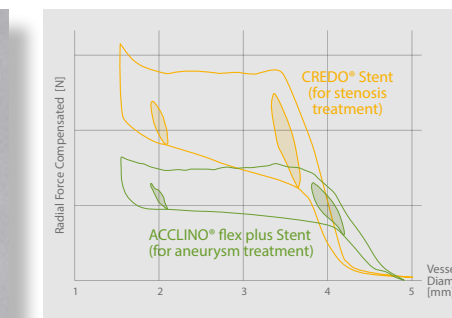
#### Unique

The CREDO® Stent is a self-expanding stent for treatment of intracranial stenosis.

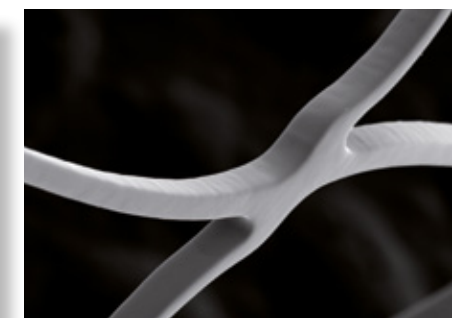
Due to its low profile, the stent can be delivered through the 0.0165" NeuroSpeed® PTA Balloon Catheter. No exchange of the PTA balloon catheter by a microcatheter is required – minimising treatment time and procedural risks.



Stent flexibility



Radial force comparison



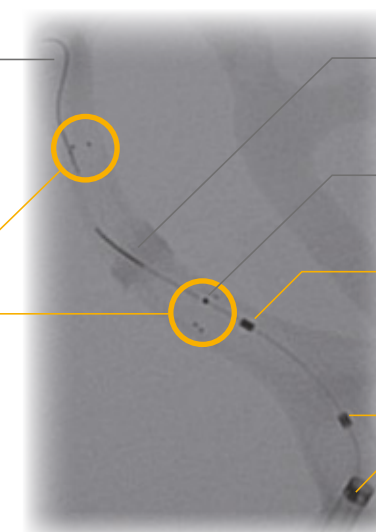
SEM of stent surface

### Radiopaque Marker Concept

Distal transport wire marker

Three distal / proximal device markers

for additional control of stent position and opening behaviour



Central transport wire marker

Proximal transport wire marker

Distal tip marker

indicating the distal tip of the NeuroSpeed® PTA Balloon Catheter

Two balloon markers

indicating the nominal length of the balloon

<sup>1</sup> Images are courtesy of Dr. Christian Löhr, Klinikum Vest, Recklinghausen, Germany

<sup>2</sup> Images are courtesy of Dr. Hannes Nordmeyer, radprax MVZ GmbH, Solingen, Germany